



Breville [®]
instructions and safety



Product Safety

This product can be used by children aged 8 years and above, and persons who require supervision, provided:

- **they are familiar with the hazards associated with the product, and,**
- **they receive instruction by a competent person on how to safely use the product.**

Children must not play with the product. Cleaning and user maintenance must not be done by children unless they are aged 8 or older and are supervised.

Keep the appliance and its cord out of reach of children less than 8 years old.

Bread may burn therefore do not use the appliance near or below combustible materials such as curtains.

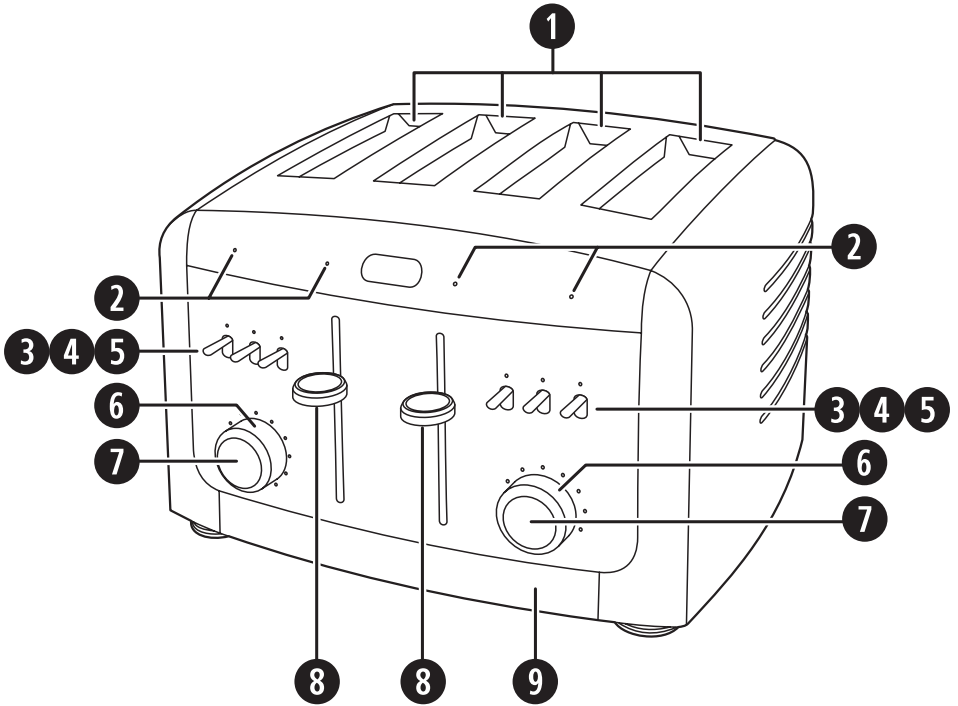
Never operate the appliance by means of an external timer or separate remote-control system.

Do not touch the metal parts of the appliance during use as they may become very hot.

If the supply cord is damaged, it must be replaced by the manufacturer, its service agent or similarly qualified persons in order to avoid a hazard.

- △ Never use this appliance for anything other than its intended use. This appliance is for household use only. Do not use this appliance outdoors.
- △ Always ensure that hands are dry before handling the plug or switching on the appliance.
- △ Always use the appliance on a stable, secure, dry and level surface.
- △ This appliance must not be placed on or near any potentially hot surfaces (such as a gas or electric hob).
- △ Never use the appliance below wall cupboards or shelves.
- △ Do not use the appliance if it has been dropped or if there are any visible signs of damage.
- △ Ensure the appliance is switched off and unplugged from the supply socket after use and before cleaning.
- △ Always allow the appliance to cool before cleaning or storing.
- △ Never immerse any part of the appliance or power cord and plug in water or any other liquid.
- △ Never let the power cord hang over the edge of a worktop, touch hot surfaces or become knotted, trapped or pinched.
- △ Never leave the appliance unattended when in use.
- △ Before connecting to a power source, make sure your mains supply voltage is the same as the one indicated on the appliance.

Features and Controls



- 1 Bread slots
- 2 Bread slot lights
- 3 Crumpet/bagel switch
- 4 Frozen bread switch
- 5 Cancel toasting switch
- 6 Browning control
- 7 Slot select switch
- 8 Loading handle with locking high lift and 'lift & look' feature
- 9 Crumb tray

Due to our policy of continuous improvement, the actual product may differ slightly from the one illustrated in these instructions.

Browning control

The browning control regulates how much the bread is toasted—in other words, the colour of the toast. Lower settings produce lighter toast and higher settings produce darker toast. The 11 lights surrounding the control display the level of browning.

Slot select switch

The slot select switch is used to choose which bread slots will be selected for toasting. The default setting is for both bread slots to be active.

High lift feature

The high lift feature uses the loading handle to help you to remove the toast. When toasting has finished, simply lift the loading handle upwards from its rest position to raise the toast and make it easier to remove. The loading handle will lock in the high lift position until pressed down again.

Lift-and-look feature

The lift-and-look feature allows you to check the progress of your toast without cancelling the toasting process. Just lift the loading handle up at any time during toasting and lower it again to resume toasting. If you find your toast is cooked to your preference, press the cancel switch to stop further toasting.

Crumpet/bagel toasting switch

This feature is specially designed to toast crumpets, bagels, burger buns, etc. Your toaster will toast one side while gently heating the other. The light will illuminate when the CRUMPET/BAGEL switch is on.

Frozen bread switch

The frozen bread switch allows you to toast bread straight from the freezer. Your toaster will extend the toasting time to allow the bread time to defrost before toasting it. The light will illuminate when the FROZEN switch is on.

Cancel switch

The toasting cycle can be stopped at any time simply by pressing the CANCEL switch down.

Toasting progress lights

The toasting progress lights surrounding the browning control will all light up as toasting starts and will go out one by one as the toasting cycle completes. The last light will go out when toasting has finished.

Using Your Toaster

▲ Never force bread into the toasting slots. Bread should fit easily into the toasting slots. Never toast slices of bread that have been buttered. Never use your toaster with any food item that contains sugar, or any product that contains jam or preserves. Don't use bent, damaged or broken bread in your toaster as it may cause it to jam.

Before first use

Carefully remove your toaster from its box. Remove all packaging from inside the toasting slots. Position your toaster on a stable, secure, dry and level work surface away from the edge. Bread may burn therefore do not use the appliance near or below combustible materials such as curtains. Never use the toaster below wall cupboards or shelves.

When you first use your toaster, there may be a slight odour as the heating elements warm up for the first time. This is quite normal and not a cause for concern. To remove the odour, simply operate your toaster for the first time without any bread in it.

Using your toaster

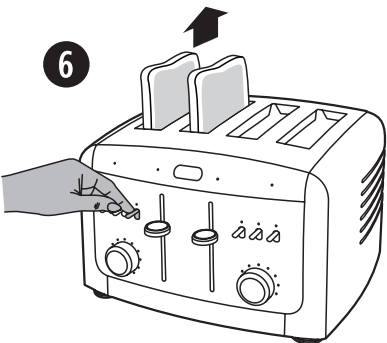
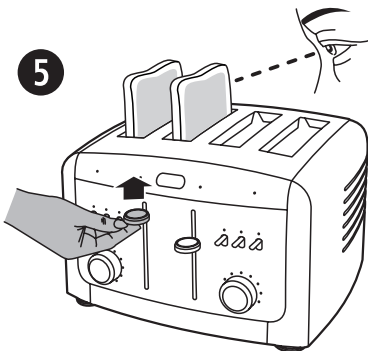
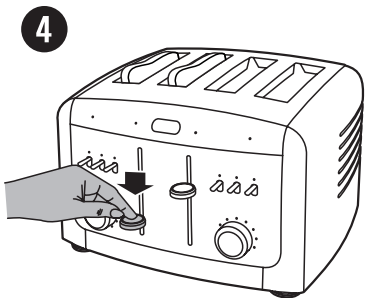
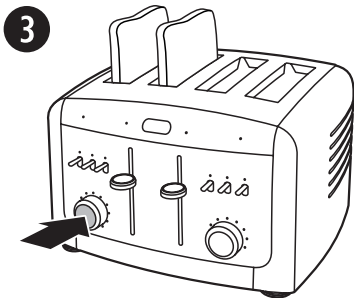
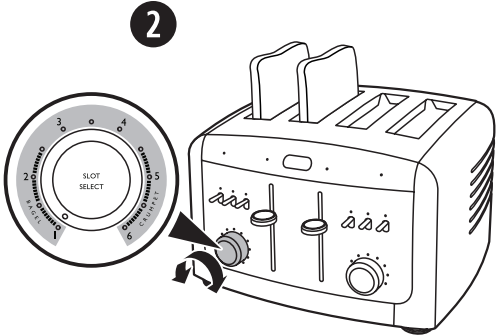
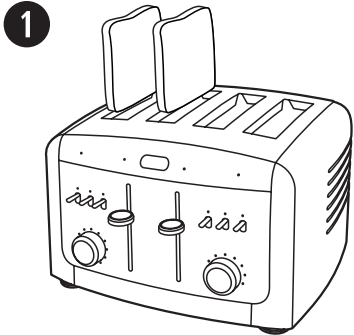
Various lights will illuminate whenever a button is pressed or a switch or dial position is changed. They will automatically switch off after 10 seconds of inactivity

1. Place the bread into the toasting slots. You can toast one, two, three or four slices of bread but only place a single slice in each slot.
2. Set the level of toasting using the browning control. The higher the number selected, the darker the toast will be. The lights around the control will show the selected level.
3. If required, use the slot select button(s) to select which bread slots you are going to use. Press the left hand button once to select slot 1 only and press it twice to select slots 1 and 2. Press the right hand button once to select slot 3 only and press it twice to select slots 3 and 4. The light in front of each slot will show when it is selected.
4. Press the loading handle down until it latches. The bread will be lowered into the toaster and toasting will begin. The loading handle will not latch if your toaster is not connected to the mains supply.

The lights surrounding the variable browning control will all light up as toasting starts and will go out one by one as the toasting cycle completes. The last light will go out when toasting has finished and the loading handle will rise. You can lift the loading handle upwards beyond its rest position to help you remove the toast.

5. You can use the lift-and-look feature during toasting to check your toast. Simply lift the loading handle up to examine your toast and lower it again to resume toasting. If you find your toast is cooked to your preference, press the relevant CANCEL switch to stop any further toasting.
6. Toasting can be stopped at any time by pressing the CANCEL switch corresponding to the slot(s) in use.
7. Use the high lift feature to remove the toast when it is finished. Fully raise the loading handle until it locks in the raised position then remove the toast.

Using Your Toaster



Using Your Toaster

Toasting crumpets, bagels, burger buns, etc

Your toaster has a special setting for toasting crumpets, bagels, burger buns etc. The setting toasts one side while gently heating the other side to ensure perfect results. To use this feature correctly, follow these instructions:

1. This feature works by toasting one side while simply heating the other. Therefore the bagel/crumpet must be placed the correct way round in the slot. Place bagels with the cut sides facing each other as shown. The cut sides will then be toasted while the uncut sides will be gently warmed.

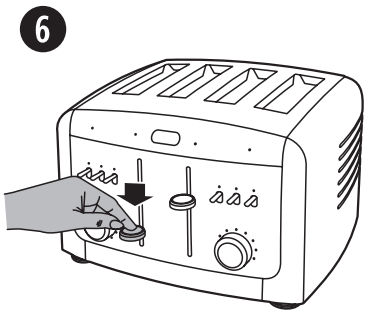
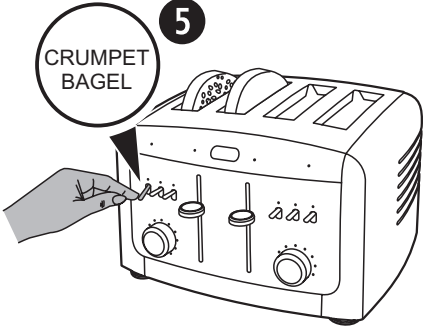
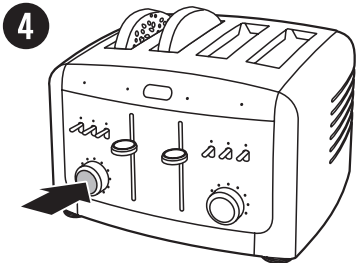
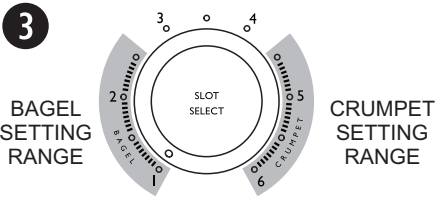
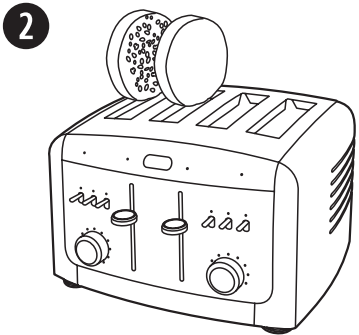
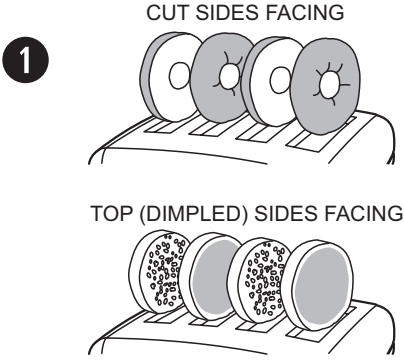
Place crumpets with the top or dimpled sides facing each other as shown. This side will be toasted and the other side will be warmed.

2. You can toast one, two, three or four bagels/crumpets, but only place a single bagel/crumpet in each slot. The slot select buttons do not work when you are using the crumpet/bagel feature.
3. For toasting bagels, set the browning control within the bagel setting range. For toasting crumpets (which have a higher moisture content), set the the browning control within the crumpet setting range. The higher the number selected in each range, the darker the bagel or crumpet will be.
4. Press the CRUMPET/BAGEL switch downwards to select the crumpet/bagel toasting feature. The light above the button will illuminate.
5. Press the loading handle down until it latches. The bread will be lowered into the toaster and toasting will begin. The loading handle will not latch if your toaster is not connected to the mains supply.

The lights surrounding the variable browning control will all light up as toasting starts and will go out one by one as the toasting cycle completes. The last light will go out when toasting has finished and the loading handle will rise. You can lift the loading handle upwards beyond its rest position to help you remove the crumpet/bagel.

6. You can use the lift-and-look feature during toasting to check your crumpet/bagel. Simply lift the loading handle up to examine your crumpet/bagel and lower it again to resume toasting. If you find your crumpet/bagel is cooked to your preference, press the relevant CANCEL switch to stop any further toasting.
7. Toasting can be stopped at any time by pressing the CANCEL switch corresponding to the slot(s) in use.

Using Your Toaster



Using Your Toaster

Toasting frozen bread

The frozen bread button allows you to toast bread straight from the freezer. Operate your toaster in the same way as for normal toasting, then press the FROZEN button after pressing the loading handle down. The light above the button will illuminate. Your toaster will extend the toasting time to allow the bread time to defrost.

Toasting tips

- Toasting is a combination of drying and cooking the bread and, because moisture levels differ from one bread to another, toasting times can vary.
- For slightly dry bread, use a lower setting than normal.
- For fresh bread or whole wheat bread, use a higher setting than normal.
- Bread which has a very uneven surface will require a higher setting.
- Thicker cut pieces of bread (including crumpets) will take longer to toast—sometimes significantly longer. This is because more moisture must be evaporated from the bread before toasting can occur. Very thick pieces of bread may require two toasting cycles.
- When toasting raisin or other fruit breads, remove any loose raisins or fruit from the surface of the bread before putting it into your toaster. This will help prevent fruit pieces from falling into your toaster or sticking to the guard wires in the toasting slot.
- Ensure the browning control is at an appropriate setting for the item being toasted. For example, ordinary bread may burn if the browning control is set within the crumpet range.

If your toaster jams

▲ Never use a knife or any other utensil or implement to remove jammed bread. Never insert your fingers into the bread slots.

1. Switch the toaster off at the mains supply socket and unplug it.
2. Allow the toaster to completely cool down.
3. Carefully ease the bread out of the toaster being careful not to damage the heating element.

⚠ Always switch off, unplug and allow your toaster to cool down before moving, cleaning or storing. Never immerse your toaster or power cord and plug in water or any other liquid.

- Clean the outside of your toaster with a damp cloth then dry thoroughly.
- Never use harsh, abrasive or caustic cleaners.

Crumb removal

It is important that crumbs are not allowed to build up inside your toaster. Excess crumbs are unhygienic and could catch fire.

Crumbs can be removed by sliding the crumb tray out from the bottom of your toaster.

- Press the front of the crumb tray once and it will open slightly.
- Pull the crumb tray completely out of your toaster.
- Tip the crumbs out and wipe the crumb tray with a damp cloth.
- Replace the crumb tray into its slot and press it inwards until it clicks.

Always make sure that your toaster has completely cooled down and is disconnected from the mains supply before removing crumbs. Never use your toaster without the crumb tray fitted. Always replace the crumb tray before using your toaster.

Connection to the Mains Supply

⚠ This appliance must be earthed.

This appliance is fitted with either a moulded or rewirable BS1363, 13 amp plug. The fuse should be rated at 13 amps and be ASTA approved to BS1362.

If the fuse in a moulded plug needs to be changed, the fuse cover must be refitted. The appliance must not be used without the fuse cover fitted.

If the plug is unsuitable, it should be dismantled and removed from the supply cord and an appropriate plug fitted as detailed below. If you remove the plug it must not be connected to a 13 amp socket and the plug must be disposed of immediately.

The wires of the mains lead are coloured in accordance with the following code:

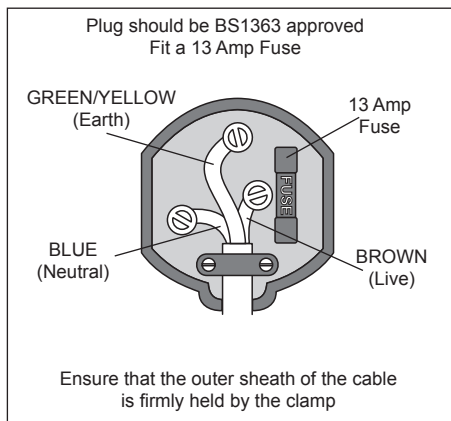
GREEN/YELLOW = EARTH BLUE = NEUTRAL BROWN = LIVE

The wire which is coloured GREEN/YELLOW must be connected to the terminal in your plug which is marked with an E or by the earth symbol (⊕) or coloured GREEN or GREEN /YELLOW.

The wire which is coloured BLUE must be connected to the terminal in your plug which is marked with the letter N or coloured BLACK.

The wire which is coloured BROWN must be connected to the terminal in your plug which is marked with the letter L or coloured RED.

If any other plug is used, a 13 amp fuse must be fitted either in the plug or adaptor or at the distributor board.



These appliances are built to the very highest of standards. There are no user serviceable parts. Follow these steps if the unit fails to operate:

1. Check the instructions have been followed correctly.
2. Check that the fuse has not blown.
3. Check that the mains supply is functional.

If the appliance will still not operate, return the appliance to the place it was purchased for a replacement. To return the appliance to the Customer Service Department, follow the steps below:

1. Pack it carefully (preferably in the original carton). Ensure the unit is clean.
2. Enclose your name and address and quote the model number on all correspondence.
3. Give the reason why you are returning it.
4. If within the guarantee period, state when and where it was purchased and include proof of purchase (e.g. till receipt).
5. Send it to our Customer Service Department at the address below:

Customer Service Department
Jarden Consumer Solutions (Europe) Limited
Middleton Road
Royton
Oldham
OL2 5LN, UK.
Telephone: 0161 621 6900 Fax: 0161 626 0391
e-mail: info@pulse-uk.co.uk

Guarantee

Please keep your receipt as this will be required for any claims under this guarantee.

This appliance is guaranteed for 1 year after your purchase as described in this document.

During this guaranteed period, if in the unlikely event the appliance no longer functions due to a design or manufacturing fault, please take it back to the place of purchase, with your till receipt and a copy of this guarantee.

The rights and benefits under this guarantee are additional to your statutory rights, which are not affected by this guarantee. Only Jarden Consumer Solutions (Europe) Limited (“JCS (Europe)”) has the right to change these terms.

JCS (Europe) undertakes within the guarantee period to repair or replace the appliance, or any part of appliance found to be not working properly free of charge provided that:

- you promptly notify the place of purchase or JCS (Europe) of the problem; and
- the appliance has not been altered in any way or subjected to damage, misuse, abuse, repair or alteration by a person other than a person authorised by JCS (Europe).

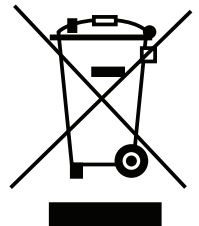
Faults that occur through, improper use, damage, abuse, use with incorrect voltage, acts of nature, events beyond the control of JCS (Europe), repair or alteration by a person other than a person authorised by JCS (Europe) or failure to follow instructions for use are not covered by this guarantee. Additionally, normal wear and tear, including, but not limited to, minor discoloration and scratches are not covered by this guarantee.

The rights under this guarantee shall only apply to the original purchaser and shall not extend to commercial or communal use.

If your appliance includes a country-specific guarantee or warranty insert please refer to the terms and conditions of such guarantee or warranty in place of this guarantee or contact your local authorized dealer for more information.

Waste electrical products should not be disposed of with household waste. Please recycle where facilities exist. E-mail us at info@pulse-uk.co.uk for further recycling and WEEE information.

Jarden Consumer Solutions (Europe) Limited
Middleton Road
Royton
Oldham
OL2 5LN
UK



Breville®



©2013 Jarden Consumer Solutions (Europe) Limited

All rights reserved. Imported and distributed by Jarden Consumer Solutions (Europe) Limited,
Royton, Oldham OL2 5LN, United Kingdom.

Jarden Consumer Solutions (Europe) Limited is a subsidiary of Jarden Corporation (NYSE:JAH).

Made in PRC