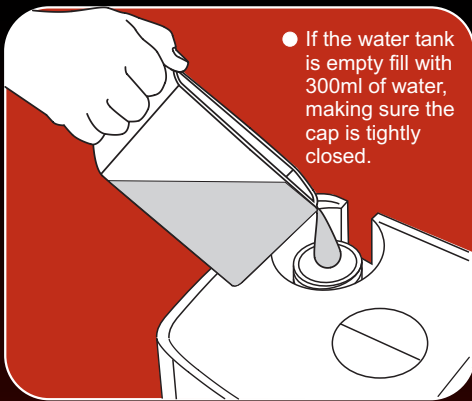


quick start Initial Cleaning



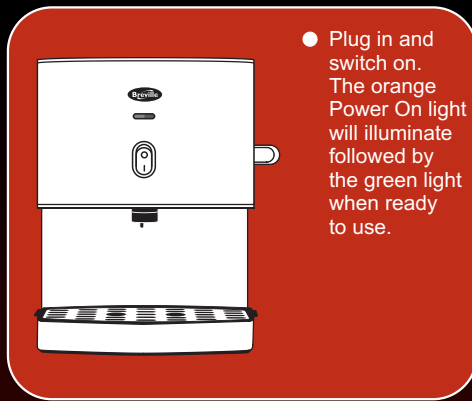
*It is important to clean the product before using for the first time and after each use.

step 1: fill with water



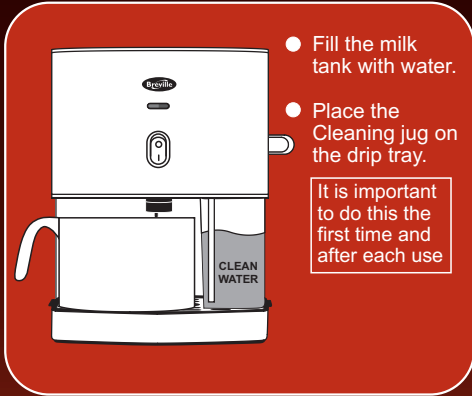
- If the water tank is empty fill with 300ml of water, making sure the cap is tightly closed.

step 2: turn on



- Plug in and switch on. The orange Power On light will illuminate followed by the green light when ready to use.

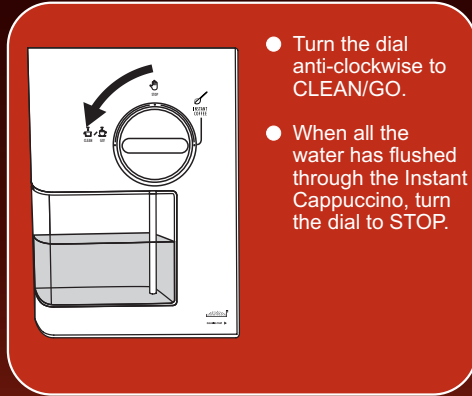
step 3: flush with water



- Fill the milk tank with water.
- Place the Cleaning jug on the drip tray.

It is important to do this the first time and after each use

step 4: clean



- Turn the dial anti-clockwise to CLEAN/GO.
- When all the water has flushed through the Instant Cappuccino, turn the dial to STOP.



Instant Cappuccino is now ready to use. Please follow the making a cappuccino instructions on the reverse of this card...



IMPORTANT!
Always follow the cleaning instructions

Milk and instant coffee granules left in the machine will damage the internal mechanism.

quick start

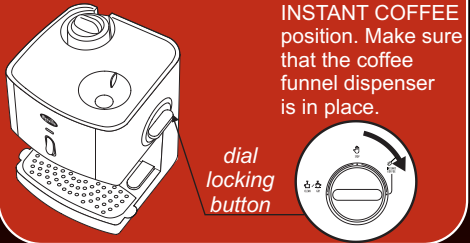
Making Cappuccino

instant
CAPPUCCINO



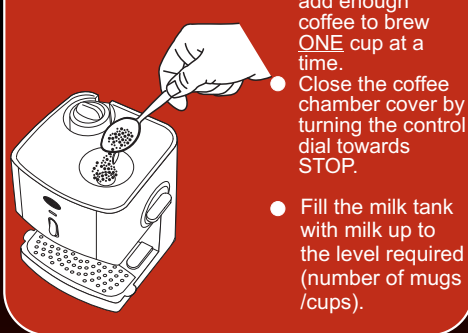
step 5: add ingredients-----

- If the water tank is empty fill with 300ml of water, making sure the cap is tightly closed.
- Open the coffee chamber cover by pushing the dial locking button and turning the control dial towards the INSTANT COFFEE position. Make sure that the coffee funnel dispenser is in place.



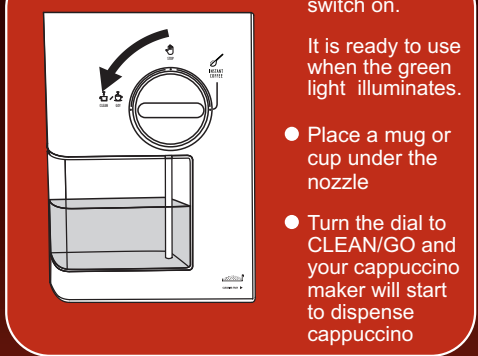
dial locking button

- Add instant coffee. Only add enough coffee to brew ONE cup at a time.
- Close the coffee chamber cover by turning the control dial towards STOP.
- Fill the milk tank with milk up to the level required (number of mugs /cups).



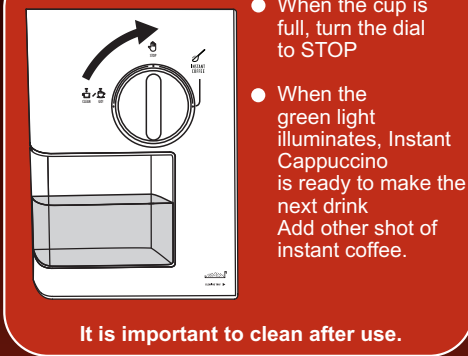
step 6: start

- Plug in and switch on.
It is ready to use when the green light illuminates.
- Place a mug or cup under the nozzle
- Turn the dial to CLEAN/GO and your cappuccino maker will start to dispense cappuccino



step 7: stop

- When the cup is full, turn the dial to STOP
- When the green light illuminates, Instant Cappuccino is ready to make the next drink. Add other shot of instant coffee.



It is important to clean after use.



IMPORTANT!
Always follow the cleaning instructions

Milk and instant coffee granules left in the machine will damage the internal mechanism