

Breville®

Turn **on** your creativity®



pick and mix
hand and stand mixer

IMPORTANT SAFETY INSTRUCTIONS. READ CAREFULLY AND KEEP FOR FUTURE REFERENCE

This appliance can be used by children aged from 8 years and above and persons with reduced physical, sensory or mental capabilities or lack of experience and knowledge if they have been given supervision or instruction concerning use of the appliance in a safe way and understand the hazards involved. Children shall not play with the appliance. Cleaning and user maintenance shall not be made by children without supervision.

Always disconnect the appliance from the mains supply socket if it is left unattended and before assembling, disassembling or cleaning.

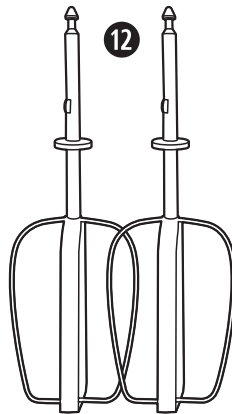
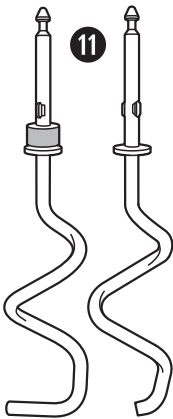
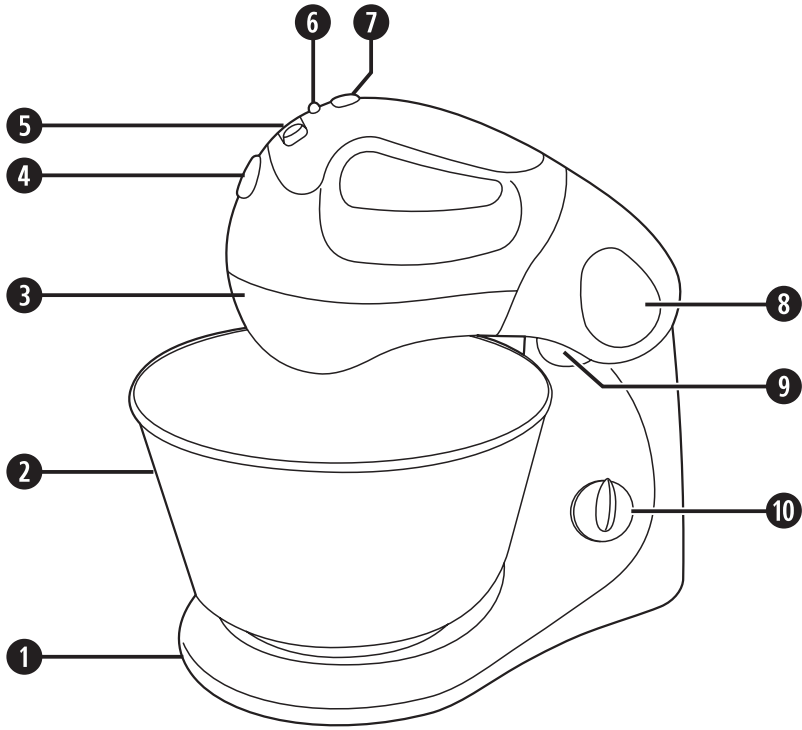
If the supply cord is damaged, it must be replaced by the manufacturer, its service agent or similarly qualified persons in order to avoid a hazard.

- ⚠ Never use this appliance for anything other than its intended use. This appliance is for household use only. Do not use this appliance outdoors.
- ⚠ Always ensure that hands are dry before handling the plug or switching on the appliance.
- ⚠ Always use the appliance on a stable, secure, dry and level surface.
- ⚠ This appliance must not be placed on or near any potentially hot surfaces (such as a gas or electric hob).
- ⚠ Never immerse any part of the appliance or power cord and plug in water or any other liquid.
- ⚠ Never let the power cord hang over the edge of a work top, touch hot surfaces or become knotted, trapped or pinched.
- ⚠ Do not use the appliance if it has been dropped, if there are any visible signs of damage or if it is leaking.
- ⚠ Never use any accessory or attachment not recommended by the manufacturer.
- ⚠ Remove attachments from the appliance before washing or cleaning them.
- ⚠ Keep fingers, hair and clothing away from the moving parts of the appliance when it is in use.
- ⚠ Do not attempt to eject, fit or remove attachments until the appliance has come to a complete stop.

features and parts

- 1. Mixer stand/bowl turntable**
Two speed turntable provides a powerful and thorough mixing action
- 2. Stainless steel bowl**
Dishwasher safe.
- 3. Detachable hand mixer**
Can be detached from the stand for hand use.
- 4. Beater release button**
Press the beater release button to remove the beaters or dough hooks
- 5. On/off switch and 5-way speed selector**
Turns your mixer on or off and selects one of 5 speed ranges. When used in conjunction with the speed range selector switch, up to 10 speeds can be selected.
- 6. Speed range selector switch**
Selects the high or low range of mixer speeds. Used in conjunction with the 5-way speed selector.
- 7. Boost button**
When held down, operates your mixer at its highest speed.
- 8. Mixer head lock release button**
Press to release the head lock and tilt or lower the mixer head.
- 9. Hand mixer release button**
When the mixer head is in the raised position the button can be pressed to detach the hand mixer.
- 10. Bowl speed control**
Selects Off, Hi or Lo speed for the mixing bowl turntable.
- 11. Dough hooks**
Stainless steel dough hooks ideal for kneading dough and cookie mixes. The dough hook with the red collar must be inserted into the red recess on the mixer. Dishwasher safe.
- 12. Beaters**
Stainless steel beaters suitable for making cakes, biscuits, pastry, scones, icing, fillings, etc. Dishwasher safe.

features and parts



Due to our policy of continuous improvement, the actual product may differ slightly from the one illustrated in these instructions.

using your mixer on the stand

Before first use

▲ Make sure your mixer is switched off and unplugged from the mains supply socket before cleaning, detaching or fitting it to the mixer stand or before fitting or removing the beaters or dough hooks.

Before using your mixer for the first time, wash the beaters, dough hooks and stainless steel bowl in warm, soapy water. Rinse and dry thoroughly. Do not use harsh abrasives, chemicals or oven cleaners. Using a damp cloth or sponge, wipe the exterior of the hand mixer and mixer stand. Dry thoroughly.

Using

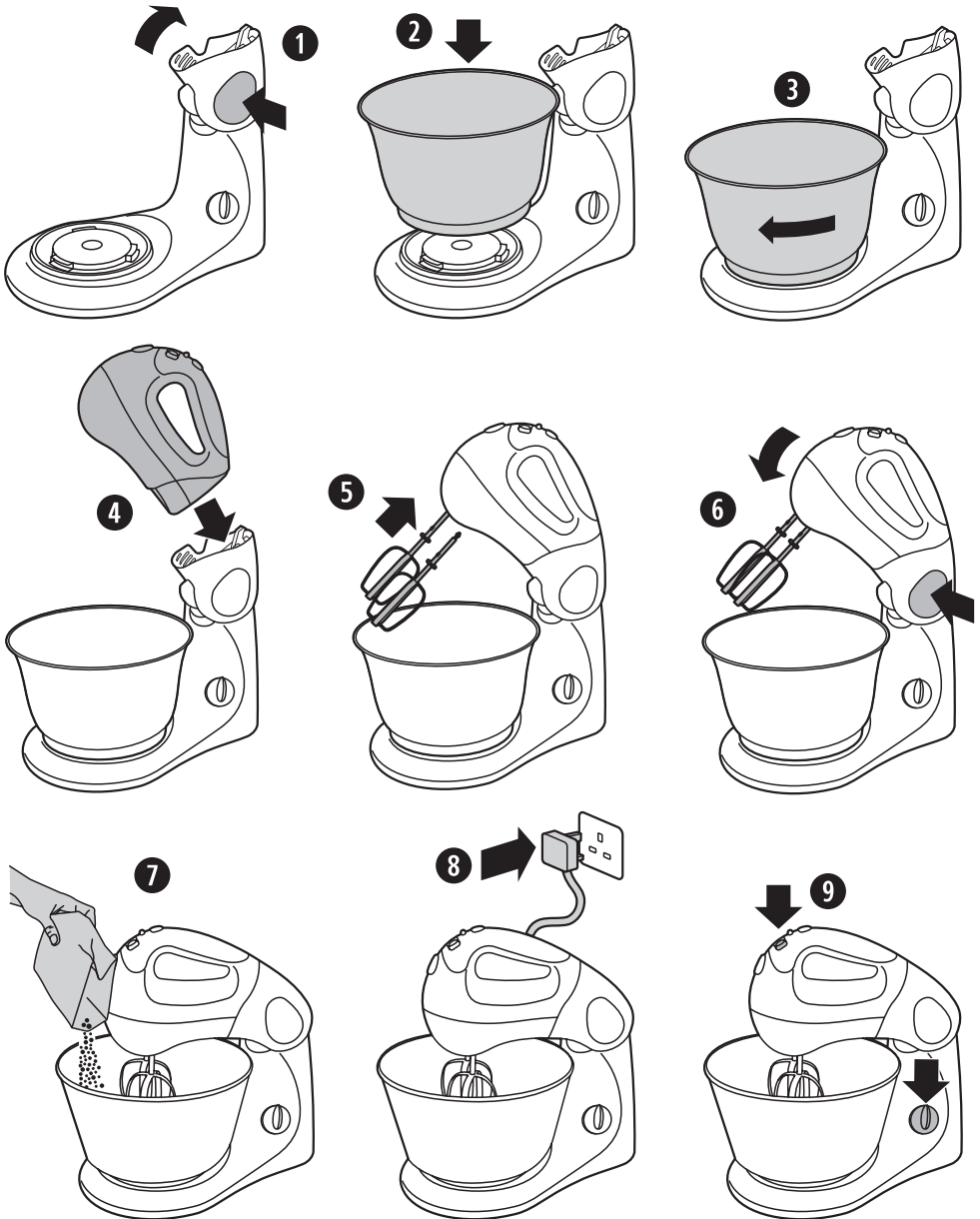
▲ Always avoid contact with moving parts while the appliance is in operation. Keep hands, hair, clothing as well as other utensils away from the beaters/dough hooks during operation.

Never attempt to remove or replace the beaters/dough hooks whilst your food mixer is in operation, or plugged in to the mains supply.

Never attempt to make pastry with the mixer on the stand. For best results, remove the mixer and use by hand.

1. Ensure that your mixer is unplugged from the supply socket and the speed selector is set to **0** (off). Press the mixer head lock release button and raise the mixer stand head until it clicks.
2. Position the lower rim of the stainless steel mixing bowl over the mixing bowl turntable.
3. Rotate the mixing bowl in a clockwise direction until it clicks into position.
4. Connect the hand mixer to the mixer stand by locating the two prongs on the stand into the two rectangular holes in the heel of the hand mixer. Press the hand mixer down until it clicks into place. Ensure that the hand mixer and mixer stand are firmly connected together.
5. Insert one of the beaters into one of the recesses and push it firmly into place. Insert the remaining beater into its recess pushing it firmly into place. When correctly fitted, **both** beaters should be locked in place.
To use the dough hooks, insert the dough hook with the red collar into the recess that is red. Insert the other dough hook into the remaining recess. Don't use the dough hooks the other way round.
6. Press the mixer head lock release button and lower the mixer head into the bowl until the head clicks. Never plug in or switch on your stand mixer before the mixer head has been lowered into the mixing bowl.
7. Add the ingredients to the mixing bowl. The beaters are offset to easily allow this.
8. Plug your mixer into the mains supply socket.
9. Turn the on/off speed selector switch to **1** to start mixing. Adjust the speed as required (see *Mixing speeds* on page 8). Use the bowl speed control to select the appropriate bowl speed.

using your mixer on the stand



using your mixer by hand

▲ Make sure your mixer is switched off and unplugged from the mains supply socket before cleaning, detaching or fitting it to the mixer stand or before fitting or removing the beaters or dough hooks.

1. Ensure that your mixer is unplugged from the supply socket and the speed selector is set to **0** (off). Press the mixer head lock release button and raise the mixer stand head until it clicks.
2. Press and hold the hand mixer release button while lifting the hand mixer from the mixer stand.
3. Plug your hand mixer into the mains supply socket.
4. Place the beaters/dough hooks into the ingredients to be mixed. Always support the container or bowl in which you are mixing ingredients whilst operating your hand mixer. Set the on/off speed selector switch to **1** to start mixing. Adjust the speed as required (see *Mixing speeds* below).
5. When mixing, guide the hand mixer through the centre and around the sides of the mixing bowl. When making pastry, use the mixer by hand and not on the stand. For best results always make sure that you:
 - use twin beaters
 - soften the butter/margarine/lard before use
 - disperse fat evenly into the flour before mixing
6. When you have finished mixing the ingredients, set the on/off speed selector to **0** (off). Use a spatula to scrape around the bowl to remove any remaining ingredients.
7. Unplug your hand mixer from the mains supply socket.

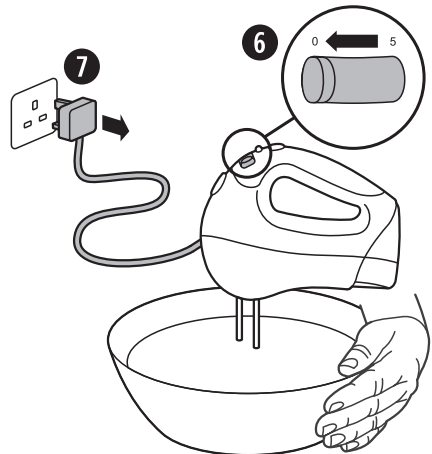
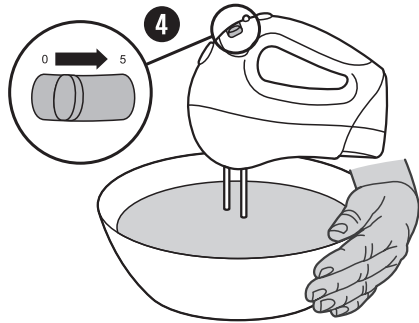
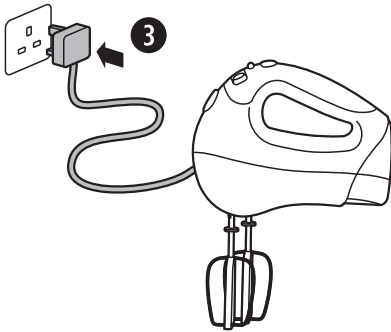
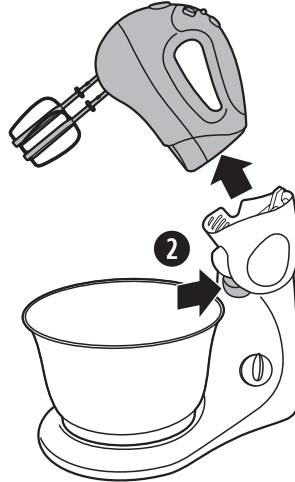
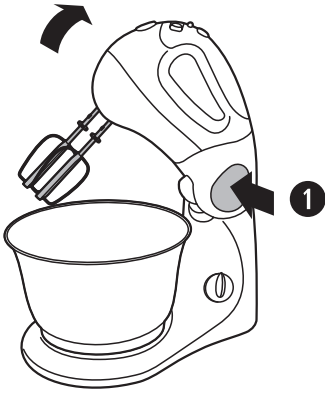
▲ Always avoid contact with moving parts while the appliance is in operation. Keep hands, hair, clothing as well as other utensils away from the beaters/dough hooks during operation.

Never attempt to remove or replace the beaters/dough hooks whilst your food mixer is in operation, or plugged in to the mains supply.

Mixing speeds

Task	Speed Range Selector Switch	Recommended Speed
Blending and folding	LO	1 and 2
Light mixing	LO	3 and 4
Creaming and beating	HI LO	2 and 3 5
Whipping and aerating	HI	4, 5 or Boost button

using your mixer by hand

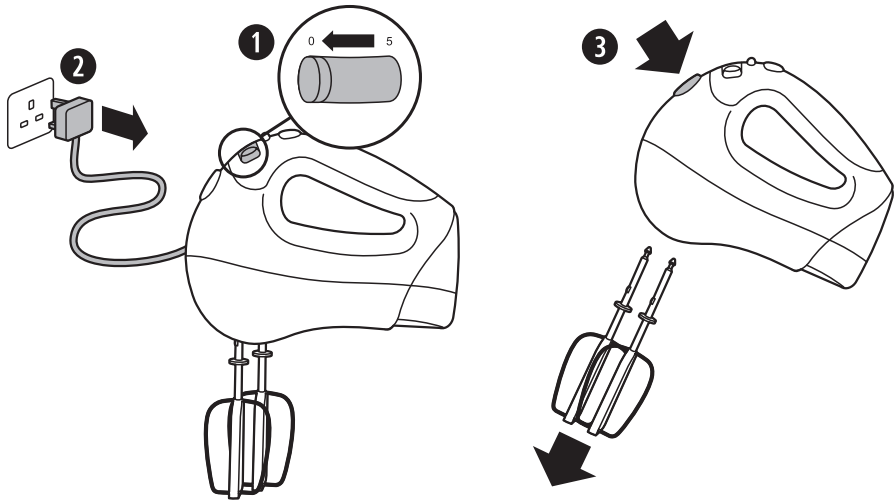


care, cleaning and storage

⚠ Make sure your mixer is switched off and unplugged from the mains supply socket before cleaning, detaching or fitting it to the mixer stand or before fitting or removing the beaters or dough hooks.

To make cleaning easier, clean your hand mixer and the beaters/dough hooks as soon as you have finished using them.

1. Set the speed selector to **0** (off) and unplug your hand mixer from the mains supply socket.
2. Eject the beaters/dough hooks from your hand mixer by pressing the eject button. The beaters/dough hooks are heavy and care should be taken not to let them fall onto fragile surfaces or items when they are being ejected. The beaters/dough hooks can't be ejected unless the speed selector is set to **0** (off).
3. Wash the beaters/dough hooks and the bowl in warm soapy water. Alternatively, wash them in a dishwasher.
4. Rinse and dry the beaters/dough hooks before storing or using again.
5. Using a dampened cloth, wipe the body of your hand mixer.



Storage

Store your hand mixer in a clean, dry place, out of the reach of children, ensuring that all the parts are dismantled.

1. Before starting, read the recipe completely.
2. Refrigerated ingredients, e.g. butter and eggs, should be at room temperature before mixing begins. Set these ingredients out ahead of time.
3. Before starting your recipe, preheat the oven to the baking temperature recommended in the recipe.
4. Place all the ingredients and any required utensils near the mixer.
5. To eliminate the possibility of shells or deteriorated/off eggs in your recipe, break eggs into a separate container first, then add to the mixture.
6. When mixing egg whites, be sure the bowls and beaters are thoroughly cleaned and dried, as even the smallest amount of oil on beaters or bowl may cause the egg whites not to aerate.
7. Always start mixing at slow speeds, especially when mixing in flour or icing sugar. Mix these ingredients slowly at first, then gradually increase the speed as required.
8. Do not over beat. Be careful that you only mix/blend mixtures until recommended in your recipe. Fold in dry ingredients only until just combined. Always use the low speed. At any stage of mixing, over beating can cause toughness, close texture, lack of rising or excessive shrinkage. Climatic conditions, seasonal temperature changes, temperature of ingredients and their texture variation from area to area all play a part in the required mixing time and the results achieved.
9. All recipes have been kitchen tested, but should you find it necessary to vary the ingredients or size of the tin etc. allow for this in the cooking time. Always test that baked foods are done before removing them from the oven or cooking appliance.
10. During mixing, ingredients may splash to the sides of the bowl. To scrape the bowl, turn the beaters and bowl control dials to the 'OFF' position and use a spatula to scrape the bowl. A light scraping after the addition of each ingredient assists in achieving efficient mixing.
11. If you don't have a tin the same size as the recipe suggests here are some alternatives: two 20cm sandwich tins, one 28 x 18cm tin, one 20 x 7cm round cake tin or a standard loaf tin.
12. Cooking times and temperatures are meant only as a guide. Light mixtures should spring back when lightly touched and heavy mixtures, fruit cake and the like, should be tested with a skewer towards the end of the suggested cooking time. If the skewer is clean when removed, the cake is cooked.
13. When making pastry, use the mixer by hand and not on the stand. For best results always make sure that you:
 - use twin beaters
 - soften the butter/margarine/lard before use
 - disperse fat evenly into the flour before mixing

hints and tips

Symptom	Possible cause
Sponge cake shrink	Unbalanced ingredients, over beating of egg whites, sudden changes of temperature or draught when taking from the oven.
Cakes do not rise	Mostly due to gross over beating, but can also be caused by too hot an oven during the first part of cooking.
Cakes sink in the centre	Too much fat, raising agent, liquid or sugar; too little flour, under cooking or slow cooking.
Cakes run over the edges	Too much batter for size of pan, too cool an oven, too much sugar, over beating, too much raising agent.
Hard outer crust	Too much flour, too little sugar, over mixing, too hot an oven.
Moist, sticky outside	Too much sugar, over beating, under baking.
Coarse, crumbly texture	Over beating, low baking temperature.
Heavy, close texture	Too much fat or sugar, over mixing, under baking, or too hot an oven.
Fruit sinks	Mixture too soft, damp fruit, too little flour, ingredients not correctly balanced, over beating.

Oven Temperatures

	°C	°C (fan)	°F	Gas Mark
Very Cool	110	90	225	¼
	130	110	250	½
Cool	140	120	275	1
	150	130	300	2
Moderate	170	150	325	3
	180	160	350	4
Moderately hot	190	170	375	5
	200	180	400	6
Hot	220	200	425	7
	230	210	450	8
Very hot	240	220	475	9

Preparing dough

1. Fit the dough hooks (don't forget to fit the hook with the red collar in the red recess).
2. Place the dry ingredients into the mixer bowl. Always keep dried yeast away from the salt or your bread will fail to rise.
3. Turn the speed control switch to **1** and the bowl control dial to **LO**.
4. Add the liquid ingredients gradually to the bowl.

You may find it useful to use a spatula to scrape the dry ingredients from the sides of the bowl during the kneading process. Always switch the unit off before scraping the sides of the bowl. Do not use the spatula near or directly behind the dough hooks. Use only a rubber or plastic spatula.

Never attempt to feed the dough into the dough hooks with your hands, spatula or any other utensil while the mixer is plugged into the supply socket or is in operation.

5. When the ingredients start to form a ball, scrape down the sides of the bowl if necessary with a spatula and remove your dough.
Always switch off and unplug the mixer first. Do not use the mixer near the edge of a work surface or table top because movement of the mixer during operation may cause it to fall off.
6. Depending on the recipe you may need to manually knead your dough. Place the dough onto a well floured surface and knead it until it is smooth and elastic. This should take approximately 5–10 minutes.
7. After kneading place the dough into a large well greased mixing bowl. Place the bowl in a warm, draft-free area and cover the bowl with a light damp cloth until the dough doubles in size.
8. Plunge your fist into the centre of the risen dough to remove the excess air. Fold the outer edges into the centre and turn the dough out onto a lightly floured surface for shaping.
9. Place the dough into tins for baking, or cut and shape the dough for making buns, rolls, etc.
10. For the final rising stage of the dough cover it with a light damp cloth and place it in a warm, draft-free area until doubled in size again.

Finishing touches

- Sprinkle loaves or buns with sesame, poppy or caraway seeds before baking.
- Top loaves with shredded cheese during the last few minutes of baking.
- Glazes may be brushed over the dough at any time before, during or after baking.
- For a shiny crust, brush with cream or evaporated milk before baking.
- For a matt finish, brush with melted butter or margarine after baking.

BASIC WHITE LOAF

7g dried yeast
1 tbsp sugar
250ml lukewarm water
90ml of lukewarm milk

60g butter, melted
500g strong white plain flour
1 tsp salt

1. Combine the first five ingredients in a small bowl and allow to stand in a warm place until mixture begins to froth. About 10 minutes.
2. Insert dough hooks into the mixer. Place sifted dry ingredients into the bowl.
3. Using a low speed, gradually add yeast mixture. Note that it will be necessary to scrape sides of bowl with a rubber spatula. Knead for 3–4 minutes.
4. Continue the kneading process until all ingredients are incorporated and dough forms a ball. Mixture will be wet and sticky. Remove the dough from the bowl using a rubber spatula.
5. Place the dough in a greased bowl, turning once to grease the top of dough. Cover and let rise in a warm place until doubled in size (40–50 minutes).
6. Knock back (punch down) the dough to release the air. Remove the dough from the bowl and place onto a well floured surface. Lightly knead dough with palm of your hands until smooth and elastic. Cut dough in half and shape into two loaf pans. Cover loosely with plastic wrap and allow to rise in a warm place until doubled in size, about 30–40 minutes. Preheat the oven to 200°C.
7. Bake for approximately 30 minutes. Baked loaves sound hollow when tapped.

BREAD ROLLS (makes approx. 12)

1. Follow steps 1–5 from the Basic White Loaf recipe.
2. Knock back (punch down) the dough to release the air. Knead lightly on a well floured surface for 3–5 minutes until the dough is smooth and elastic. Cut the dough into 12 portions and roll each portion across the bench, until an even soft ball.
3. Place each portion of dough onto a baking tray lined with baking paper. Cover in plastic wrap, allow to double in size (about 20–40 minutes), brush with eggwash and sprinkle with a mixture of poppy and sesame seeds.
4. Bake on 200°C for 15–20 minutes.

Note: Eggwash is a mixture of egg yolk and tepid water used to glaze the top of uncooked bakery goods to give a shiny glaze.

Variations:

Flat rolls can be made using this recipe. After dividing the dough into equal portions and shaping into rounds, flatten each round with a rolling pin to approximately 1.5cm thick. Place close together on prepared trays, brush with melted butter and sprinkle with sesame seeds. Cover with plastic wrap and allow to rise in a warm place for approximately 10 minutes. Bake for approximately 20 minutes.

FRUIT LOAF (makes 2 loaves)

7g dry yeast	500g plain flour or bread flour
20g sugar	2 tbsp powdered milk
60g butter or margarine, melted	1 tsp salt
310ml lukewarm milk	175g mixed fruit
190ml of water	

1. Combine the yeast, sugar, butter and water in a small bowl. Allow to stand in a warm place until mixture begins to froth.
2. Insert dough hooks into the mixer. Place the sifted dry ingredients including the mixed fruit into the mixer bowl.
3. On a low speed, gradually add the yeast mixture. Note that it will be necessary to occasionally scrape the sides of the bowl with a spatula. Always stop the mixer first. Knead for 4–5 minutes.
4. Continue the kneading process until all ingredients are incorporated and dough forms a ball. Mixture will be wet and sticky. Remove the dough from the bowl using a rubber spatula.
5. Place the dough in a greased bowl, turning once to grease top of the dough. Cover and let rise in a warm place until doubled in size (40–50 minutes).
6. Knock back (punch down) the dough to release the air. Turn the dough out onto a well floured surface and knead lightly for 1–2 minutes until smooth.
7. Cut and shape into loaf pans. Cover with plastic wrap and allow to rise in a warm place until doubled in size, about 30–40 minutes. Preheat the oven to 200°C.
8. Bake for approximately 30 minutes. Baked loaves sound hollow when tapped. This makes 2 loaves.

If the dough is too wet, while the mixer is kneading slowly sprinkle a tablespoon of flour at a time until the mixture is smooth and moist but not wet. The dough should be slightly sticky, soft and elastic.

recipes

WHOLEMEAL LOAF (makes one large or two small loaves)

7g dry yeast	250g strong white plain flour
2 tbsp sugar	180g strong wholemeal flour
300ml lukewarm water	1 tsp salt
30g butter, melted	

1. Combine the yeast, sugar, water and butter in a small bowl and allow to stand in a warm place until mixture begins to froth. About 10 minutes.
2. Fit the dough hooks. Place the sifted dry ingredients into the mixer bowl.
3. On a low speed, gradually add the yeast mixture. Note that it will be necessary to occasionally scrape the sides of the bowl with a spatula. Always stop the mixer first. Knead for 3–5 minutes.
4. Continue the kneading process until all ingredients are incorporated and dough forms a ball. The dough will be wet and sticky.
5. Place dough in a greased bowl, turning once to grease top of dough. Cover with plastic wrap and let rise in a warm place until doubled in size (40–50 minutes).
6. Knock back (punch down) the dough to release the air. Knead on a lightly floured surface. Cut the dough in half and shape into loaf pans. Cover with plastic wrap and allow to rise in a warm place until doubled in size, (about 30 minutes). Preheat the oven to 200°C.
7. Bake for approximately 30 minutes. Baked loaves sound hollow when tapped.

Variations:

This dough can be used to make bread rolls, breadsticks, and as the basis for other wholemeal bakery goods.

Note: Grain bread flour mix can be used as a substitute for plain and wholemeal flours.

SCONES (makes approximately 8)

225g plain flour	55g butter plus extra for greasing
2 tsp baking powder	25g caster sugar
pinch of salt	150ml milk plus extra for brushing

1. Heat the oven to 220°C. Lightly grease a baking sheet.
2. Mix together the flour, baking powder, sugar and salt in the mixer bowl on a low speed. Add the butter and mix until the mixture resembles crumbs. Add the milk bit by bit to get a soft dough.
3. Turn on to a floured work surface and knead very lightly. Pat out to a round 2cm ($\frac{3}{4}$ in) thick. Use a 5cm (2in) cutter to cut out rounds and place on a baking sheet. Lightly knead together the rest of the dough and cut out more scones until the mixture is used up.
4. Brush the tops of the scones with milk. Bake for 12–15 minutes until well risen.
5. Cool on a wire rack and serve with butter and jam and maybe some clotted cream.

Variations:

Fruit scones: Dried fruit of your choice. Add at step 2.

VICTORIA SPONGE CAKE

225g self raising flour (sifted)
 225g softened butter (extra for greasing)
 225g caster sugar
 4 large free range eggs
 Icing sugar for dusting

1 tsp vanilla essence

For the filling:

6 tbsps strawberry jam
 300ml double cream (chilled)

1. Heat the oven to 180°C.
2. Lightly grease two sandwich tins 15–17.5cm (6–7in) and line base with greaseproof paper.
3. Cream together the butter and sugar in the mixer bowl on a medium speed until it's pale and creamy to get lots of air into the mixture (approx 3–5 minutes).
4. Add the vanilla essence, then beat in the eggs one at a time adding a tablespoon of flour if the mixture starts to curdle.
5. Fold in the flour but be careful not to over mix as the air will be lost.
6. Divide the mixture between the two cake tins and level off the top. Create a slight well in the centre to avoid a mound when the mixture rises during baking.
7. Bake for approximately 20 minutes or until cakes are a pale golden colour and spring back when pressed.
8. Leave to cool for 10 minutes and remove from tins, placing on a wire rack to cool completely.
9. Whip the cream until soft peaks are formed.
10. Spread the sponge with jam and the whipped cream on one cake, then carefully sandwich together.
11. Dust with icing sugar and serve.

VANILLA CUPCAKES (makes about 24)

225g of good quality butter
 225g of caster sugar
 4 medium eggs

225g of self raising flour
 ½ tbsps of natural vanilla extract

1. Pre heat the oven to 180°C.
2. Separate the cake cases on to a baking tray.
3. Put the caster sugar, chopped up butter and vanilla into the mixer bowl and cream together on a medium speed. Then add the sieved flour.
4. Mix together for about 1 minute until all the ingredients are combined.
5. Next, add the eggs one at a time and slowly mix until soft and creamy.
6. Spoon the mixture into the cases and fill about ¾ full.
7. Cook the cupcakes for approximately 10–15 minutes or until they feel spongy and firm.

Alternative Flavours

Chocolate cupcakes: Use the Vanilla cupcake recipe but instead use 195g of self raising flour and 30g of good quality cocoa powder.

Lemon cupcakes: Substitute vanilla extract with lemon extract or alternatively the zest of 1 lemon.

SIMPLY CREAMY FROSTING

200g of full-fat cream cheese at room temperature

100g of soft unsalted butter
600g of sieved icing sugar

Delicious on its own or you can use it as a base for adding flavours.

1. Add all the ingredients to your mixer bowl. Mix for 1 minute until smooth.

Alternative Flavours

Vanilla: Add 1 tsp of natural vanilla extract whilst mixing.

Chocolate: Melt 100g of good quality chocolate (preferably 72% cocoa). Allow the chocolate to cool slightly and then slowly add it to the frosting mixture using a slow speed setting on your processor.

Zesty Lemon: Mix in the grated zest of 1 lemon.

PAVLOVA

4 egg whites

3 tsp cornflour

200g caster sugar

½ tsp vanilla extract

2 tsp vinegar

1. Preheat the oven to 120°C. Grease and flour 20cm round tin.
2. Using the clean dry mixer bowl whip the egg whites on a high speed until stiff peaks are formed.
3. Gradually add the sugar, a teaspoon at a time to start. Beat well between each addition. As mixture thickens add the sugar more quickly. This should take approximately 5–8 minutes mixing time.
4. Reduce speed to 1 and fold through vinegar, cornflour and vanilla. Continue mixing until mixture is stiff and glossy, approximately 2–3 minutes.
5. Spread half of the pavlova onto a prepared tray. Pipe the remaining mixture to form border.
6. Bake for 1¼ – 1½ hours. If able, turn oven off and allow to cool in the oven overnight or for a few hours.

Decorate as desired. Fresh cream and lots of fresh berries is delicious. Sprinkle with icing sugar to finish off.

ETON MESS

Meringue shell prepared and baked as per the Pavlova recipe

570ml double cream

450g fresh strawberries/raspberries, washed and hulled

Mint leaves (optional)

1. Place the cream in the bowl and lightly whip until soft peaks are formed.
2. Break the meringue into small pieces and combine with the fruit and the cream.
3. Spoon into a glass dish decorating with some slivers of fresh mint.
4. Serve immediately.

CHOCOLATE CHIP COOKIES (makes approx. 10–15)

125g butter or margarine	270g plain flour
120g caster sugar	1 tsp salt
120g brown sugar	1 tsp bicarbonate of soda
2 eggs	180g chocolate chips
1 tsp vanilla essence	

1. Preheat the oven to 170°C and grease the baking trays.
2. Place the butter and sugar into the mixing bowl and cream until combined.
3. Add the eggs and vanilla and beat on a high speed until light and fluffy.
4. Add in the sifted dry ingredients and mix until well combined.
5. Fold in the chocolate chips using a spoon.
6. Place teaspoonfuls of the mixture onto the trays and bake for 12–15 minutes or until golden.
7. Allow to cool on wire racks.

EASY CHOCOLATE FUDGE CAKE

225g plain flour	125ml vegetable oil
375g caster sugar	2 tsp vanilla essence
85g good quality cocoa powder	250ml boiling water
1.5 tsp baking powder	<i>For the ganache icing:</i>
1.5 tsp bicarbonate of soda	200g dark chocolate – plus extra for decoration
2 large free range eggs	200ml double cream
250ml milk	

1. Heat the oven to 180°C.
2. Lightly grease and line two sandwich tins 20cm (8in).
3. Put all the cake ingredients except the hot water into mixing bowl and beat the mixture until well mixed and smooth (approx 3–5 minutes).
4. Gradually add the boiling water to the mixture and continue whisking until completely smooth and of a runny consistency.
5. Divide the mixture between the two cake tins and bake for approximately 25–35 minutes or until the top is firm to touch. Check cake is cooked by inserting a skewer into the centre of the cake and if it comes out clean then it is cooked.
6. Remove the tins from the oven and leave to cool before removing from the tins.
7. For the icing, heat the cream slowly in a saucepan over a low heat. Remove from the heat then add the chocolate and cream to the mixer bowl. Whisk on a low speed until completely smooth and glossy (the heat of the cream should melt the chocolate). Leave to cool until the mixture thickens enough to spread it onto the cake.
8. Remove the cakes from the tins. Spread some of the chocolate ganache on one then sandwich them together. Use the remainder of the icing to cover the cake.
9. Using a peeler scrape some chocolate off the extra chocolate kept for decoration and sprinkle on top of the cake.

ZESTY LEMON DRIZZLE CAKE

225g self raising flour (sifted)
225g softened butter (extra for greasing)
225g caster sugar
4 large free range eggs
Juice and zest of 1 lemon

For the filling:
100g lemon curd
200g mascarpone
75ml double cream (chilled)
50g of icing sugar

For the topping:
Juice and zest of 2 lemons
85g caster sugar

1. Heat the oven to 180°C.
2. Lightly grease two sandwich tins 15–17.5cm (6–7in) and line the base with greaseproof paper.
3. Cream together the butter and sugar on a medium speed in the mixer bowl until pale and creamy to get lots of air into the mixture (approx 3–5 minutes).
4. Beat in the eggs, lemon zest and juice until well mixed, then fold in the flour.
5. Divide the mixture between the two cake tins and level off the top. Create a slight well in the centre to avoid a mound when the mixture rises during baking.
6. Bake for approximately 20 minutes or until the cakes are a pale golden colour and spring back when pressed.
7. Leave to cool for 5 minutes and using a skewer prick the top of one of cakes.
8. To make the lemon drizzle, mix together the lemon juice and caster sugar for the topping and drizzle over the skewered cake, sprinkle the top with the zest then leave both cakes to cool completely then remove from tins.
9. Add all the filling ingredients into a bowl and whisk until well mixed.
10. Spread the filling onto the non skewered cake then carefully sandwich together, ensuring the lemon drizzle is at the top of the cake.

CARROT AND PECAN CAKE

350g carrots
50g pecans
110g self-raising wholemeal flour
110g plain wholemeal flour
2tsp ground mixed spice
1 tsp bicarbonate of soda
240ml vegetable oil
170g soft brown sugar

4 eggs
2 tbs golden syrup

For the topping:
200g cream cheese
56g softened, unsalted butter
56g sifted icing sugar
1 tsp vanilla essence

1. Peel and grate the carrots. Chop the pecans and set to one side.
2. In a separate bowl, sieve together both flours, bicarbonate of soda and the mixed spice.
3. Using the food mixer bowl, whisk together the vegetable oil, sugar, eggs and golden syrup.
4. Add the dry ingredients to the mixture and mix slowly until the mixture is nice and smooth. Add the carrots and pecans.
5. Tip the mixture into a greased, lined tin and cook at 160°C for 1 hour or until cooked.
6. To make the topping, mix the cream cheese, butter, icing sugar and vanilla essence with your food mixer until the mixture is smooth.
7. Allow the cake to cool then add the topping.

RICH FRUIT CAKE

225g plain flour (sifted)	1 tbsp marmalade
200g softened butter (plus extra for greasing tin)	½ tsp mixed spice
200g dark brown sugar	¼ tsp nutmeg
4 large free range eggs lightly beaten	¼ tsp vanilla essence
900g mixed dried fruit	¼ tsp salt
150g glacé cherries (halved)	3 tbsp brandy (optional)
2tbsp black treacle	Blanched almonds to decorate if not icing (optional)

1. Heat the oven to 150°C.
2. Lightly grease an 20cm (8in) round tin or 18cm (7in) square sandwich tin and line with greaseproof paper.
3. Sieve the flour, salt and spices into a bowl.
4. Cream the butter and sugar in the mixing bowl on a medium speed for about 2 minutes or until it's pale in colour. Then add the treacle, marmalade and vanilla essence until the mixture is well mixed, light and smooth.
5. Add the eggs a little at a time and mix well (add a tablespoon of flour if the mixture starts to curdle). Add a tablespoon of flour with the last of the eggs.
6. Fold in the remaining flour until well mixed and then add the dried fruit and glacé cherries and mix until well combined.
7. Put the mixture into the prepared cake tin, smoothing the top and create a hollow in the centre to help level the cake when it rises
8. If you are not icing the cake and are using the almonds, place them lightly on the top of the cake in your desired pattern. Do not press them into the mix as they may sink into the cake.
9. Place in the oven for a minimum of 3 hours. Don't be tempted to open the oven door to check your cake.
10. Test with a skewer in the centre of the cake, if it comes out clean it is ready if not bake for another hour checking with a skewer approximately every 20 minutes.
11. When the cake's ready remove it from the oven and leave it in the tin to cool for approx 15–20 minutes.
12. Remove the cake from the tin and place it on a wire rack. Leave it to fully cool down.
13. If you are using brandy, make some fine holes in the top of the cake with a skewer and pour the brandy over the top allowing it to soak into the cake.
14. If you are preparing the cake in advance, wrap it in foil or greaseproof paper and store it in an airtight container.
15. For a rich, moist cake spoon 2–3 tbsp of brandy over the cake each week until it's ready to be eaten.

GLUTEN-FREE/FLOURLESS CHOCOLATE CAKE

2 tbsp ground almonds plus extra for dusting the tin	Pinch of salt
300g dark chocolate	Finely grated zest of an orange
275g caster sugar	¼ tsp of mixed spice
165g softened butter (plus extra for greasing tin)	¼ tsp vanilla essence
5 large free range eggs	Icing sugar for dusting
	Double cream to serve

1. Heat the oven to 180°C /160°C fan /Gas 4.
2. Brush the tin with a little melted butter and dust with some ground almonds.
3. Slowly melt the chocolate, caster sugar, butter and salt in a bowl over a pan of hot water then remove from the heat. Don't let the water touch the bowl or the chocolate may scorch and turn grainy.
4. In your mixer bowl, whisk the eggs, ground almonds, mixed spice, vanilla essence and orange zest together on a medium speed until light, then fold the mixture into the melted chocolate for approx 1–2 minutes or until the mixture thickens.
5. Pour mixture into cake tin and bake for 35–40 minutes. The cake will not rise much and a light crust should form on the top of the cake whilst the inside remains moist.
6. Remove it from the tin and leave it to cool. Dust with icing sugar.
7. For best results, chill overnight to get a rich, fudgy texture.

NO-BAKE DOUBLE CHOCOLATE CHEESECAKE

175g chocolate digestive biscuits	200g good quality dark chocolate (plus extra for decoration)
50g butter (melted)	
300g cream cheese	200g good quality white chocolate (plus extra for decoration)
200g mascarpone	

1. Crush the biscuits and mix with the melted butter. Press the biscuit mixture into a springform tin (approx 20cm) and set aside.
2. Slowly melt the dark and white chocolates separately in bowls above a pan of water. Do not let the water touch the bowl or the chocolate will scorch and turn grainy.
3. Mix the cream cheese and mascarpone together in the mixer bowl on a low speed then divide equally into two bowls.
4. Add the melted dark chocolate to one portion of the mix and the white chocolate into the other and fold until combined.
5. Spoon both mixtures into the tin on top of the biscuit base and create a marbled effect by running a knife in a swirling motion through the mixture.
6. Level the top and refrigerate for at least 2 hours but preferably overnight.

YORKSHIRE PUDDINGS (makes approx 8)

175g plain flour

2 large eggs

Pinch salt

Pinch black pepper

175ml milk

110ml water

1. Preheat the oven to 220°C. Add the fat or oil of your choice into the Yorkshire pudding tin then place the tin into the hot oven and allow the tin to heat up until the fat or oil is piping/smoking hot.
2. Sieve flour into bowl from a height to ensure flour is aerated.
3. Make a well in the centre and break the eggs into the well. Add the salt and pepper.
4. Start your mixer and beat well for approx 2–3 minutes or until the mixture becomes stiff.
5. Gradually add the milk and water mixture and continue whisking until the batter is smooth, aerated and a thick pouring consistency (3–4 minutes).
6. Pour the mixture into the pudding tin then return it to the oven. Cook for approximately 40 minutes or until golden brown and well risen.

Sweet Crêpes

Why not try using up any left over Yorkshire pudding batter mix by making some pancakes?

1. Heat a suitable skillet or heavy frying pan. Pour $\frac{1}{3}$ cup of batter into the pan tilting the pan to distribute the batter evenly.
2. Cook over a medium heat until lightly browned. Toss or flip the pancake over and brown the other side.
3. Turn out onto a warmed plate. Dust with sugar and add a drizzle of lemon juice. Roll and serve hot.

connection to the mains supply

If the plug is not suitable for the socket outlets in your home, it can be removed and replaced by a plug of the correct type.

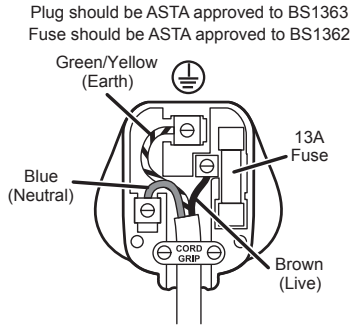
If the fuse in a moulded plug needs to be changed, the fuse cover must be refitted. The appliance must not be used without the fuse cover fitted.

If the plug is unsuitable, it should be dismantled and removed from the supply cord and an appropriate plug fitted as detailed. If you remove the plug it must not be connected to a 13 amp socket and the plug must be disposed of immediately.

If the terminals in the plug are not marked or if you are unsure about the installation of the plug please contact a qualified electrician.



This symbol indicates that this unit is a Class II appliance and therefore an earth connection is not required.



Ensure that the outer sheath of the cable is firmly held by the cord grip

These appliances are built to the very highest of standards. There are no user serviceable parts. Follow these steps if the unit fails to operate:

1. Check the instructions have been followed correctly.
2. Check that the fuse has not blown.
3. Check that the mains supply is functional.

If the appliance will still not operate, return the appliance to the place it was purchased for a replacement. To return the appliance to the Customer Service Department, follow the steps below:

1. Pack it carefully (preferably in the original carton). Ensure the unit is clean.
2. Enclose your name and address and quote the model number on all correspondence.
3. Give the reason why you are returning it.
4. If within the guarantee period, state when and where it was purchased and include proof of purchase (e.g. till receipt).
5. Send it to our Customer Service Department at the address below:

Customer Service Department
Jarden Consumer Solutions (Europe) Limited
Middleton Road, Royton, Oldham OL2 5LN, UK.
Telephone: 0161 621 6900 Fax: 0161 626 0391
e-mail: enquiriesEurope@jardencs.com

Replacement parts

For additional or replacement parts, please visit www.breville.co.uk or call us on **0161 621 6900**.

Troubleshooting

For troubleshooting and FAQs visit www.breville.co.uk/faqs

Turn on your Creativity™

Let the Breville® team help you turn on your creativity with a gateway to a world of food and drinks without limits. You don't have to travel far—just to your computer, tablet or mobile—where you will discover our FREE website with top tips and recipes to inspire your imagination. Join us now at www.turnonyourcreativity.com

Turn  your creativity®

guarantee

Please keep your receipt as this will be required for any claims under this guarantee.

This appliance is guaranteed for 1 year after your purchase as described in this document.

During this guaranteed period, if in the unlikely event the appliance no longer functions due to a design or manufacturing fault, please take it back to the place of purchase, with your till receipt and a copy of this guarantee.

The rights and benefits under this guarantee are additional to your statutory rights, which are not affected by this guarantee. Only Jarden Consumer Solutions (Europe) Limited (“JCS (Europe)”) has the right to change these terms.

JCS (Europe) undertakes within the guarantee period to repair or replace the appliance, or any part of appliance found to be not working properly free of charge provided that:

- you promptly notify the place of purchase or JCS (Europe) of the problem; and
- the appliance has not been altered in any way or subjected to damage, misuse, abuse, repair or alteration by a person other than a person authorised by JCS (Europe).

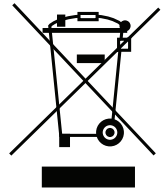
Faults that occur through, improper use, damage, abuse, use with incorrect voltage, acts of nature, events beyond the control of JCS (Europe), repair or alteration by a person other than a person authorised by JCS (Europe) or failure to follow instructions for use are not covered by this guarantee. Additionally, normal wear and tear, including, but not limited to, minor discoloration and scratches are not covered by this guarantee.

The rights under this guarantee shall only apply to the original purchaser and shall not extend to commercial or communal use.

If your appliance includes a country-specific guarantee or warranty insert please refer to the terms and conditions of such guarantee or warranty in place of this guarantee or contact your local authorized dealer for more information.

Waste electrical products should not be disposed of with household waste. Please recycle where facilities exist. E-mail us at enquiriesEurope@jardencs.com for further recycling and WEEE information.

Jarden Consumer Solutions (Europe) Limited
5400 Lakeside
Cheadle Royal Business Park
Cheadle
SK8 3GQ
UK







Jarden Consumer Solutions (Europe) Limited
Cheadle Royal Business Park, Cheadle, SK8 3GQ, United Kingdom
e-mail: enquiriesEurope@jardencs.com
Telephone: 0161 621 6900

For Customer Service details, please see the website.

www.breville.co.uk

© 2015 Jarden Consumer Solutions (Europe) Limited

All rights reserved. Imported and distributed by Jarden Consumer Solutions (Europe) Limited,
Cheadle Royal Business Park, Cheadle, SK8 3GQ, United Kingdom.

The product supplied may differ slightly from the one illustrated due to continuing product development.

Printed in China