

# Breville



2200W  
**steam iron**

---

instruction booklet





**This product can be used by children aged 8 years and above, and persons who require supervision, provided:**

- **they are familiar with the hazards associated with the product, and,**
- **they receive instruction by a competent person on how to safely use the product.**

**Children must not play with the product. Cleaning and user maintenance must not be done by children unless they are supervised.**

**Keep the appliance and its cord out of reach of children less than 8 years old when it is switched on or cooling down.**

**The appliance must not be left unattended when it is connected to the mains supply.**

**The appliance must be unplugged from the mains supply socket before filling the water tank with water.**

**Always use the appliance on a stable, secure, dry and level surface. When placing the appliance on its stand, ensure that the surface on which the stand is placed is stable.**

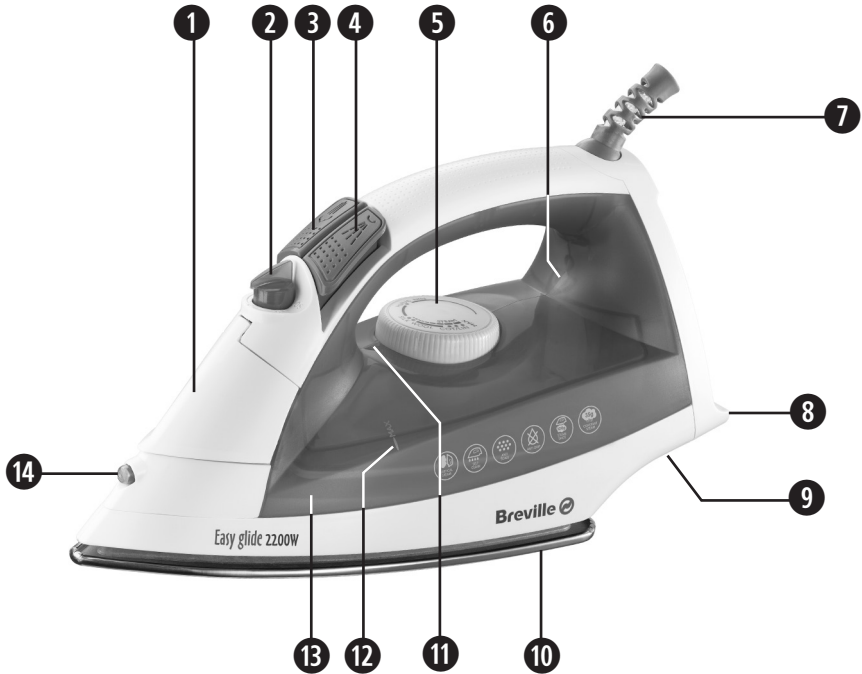
**Do not use the appliance if it has been dropped, if there are any visible signs of damage or if it is leaking.**

**If the supply cord is damaged, it must be replaced by the manufacturer, its service agent or similarly qualified persons in order to avoid a hazard.**



**Please read these instructions before operating the appliance and retain them for future use.**

- ⚠ Never use this appliance for anything other than its intended use. This appliance is for household use only. Do not use this appliance outdoors.
- ⚠ Always ensure that hands are dry before handling the plug or switching on the appliance.
- ⚠ Do not touch the metal parts of the appliance during use as they may become very hot.
- ⚠ This appliance must not be placed on or near any potentially hot surfaces (such as a gas or electric hob).
- ⚠ Always allow the appliance to cool before cleaning or storing.
- ⚠ Never immerse any part of the appliance or power cord and plug in water or any other liquid.
- ⚠ Never let the power cord hang over the edge of a worktop, touch hot surfaces or become knotted, trapped or pinched.



- |                            |                                   |
|----------------------------|-----------------------------------|
| 1. Water tank inlet cover  | 8. Heel rest                      |
| 2. Steam control           | 9. Cord wrap                      |
| 3. Shot of steam button    | 10. Ceramic finish soleplate      |
| 4. Spray button            | 11. Pointer                       |
| 5. Temperature selector    | 12. Water level maximum indicator |
| 6. Indicator light         | 13. Water tank                    |
| 7. Flexible cord protector | 14. Spray nozzle                  |

Due to our policy of continuous improvement, the actual product may differ slightly from the one illustrated in these instructions.



**▲ Remove all packaging including any soleplate protection before using your iron.**

Wipe over the soleplate with a cloth moistened with methylated spirit. Wipe off the methylated spirit with a damp cloth then dry the soleplate thoroughly.

Fill the water tank and then empty it. This will rinse out any foreign particles remaining in the water tank from the manufacturing process. Never fill your iron by holding it directly under a tap, always use a jug.

Before connecting your iron to the mains supply, make sure your supply voltage is the same as the one indicated on your iron.

When you first use your iron, there may be a slight odour and it may smoke slightly for the first few minutes of operation. This is quite normal and will disappear.



**⚠ Never add fabric conditioner, starches or any other chemicals to the water in your iron.**

1. Ensure your iron is switched off and unplugged from the mains supply socket.
2. Set the steam control to the no steam position (0).
3. Open the water tank inlet cover.
4. Fill the water tank with ordinary tap water. To avoid air locks, tilt your iron slightly while filling it.
5. Don't fill your iron above the water level indicator MAX marking. Check the water level by standing your iron on its heel.
6. When your iron is filled, close the water tank inlet cover.



## We recommend that you:

- Start by ironing those items of laundry that require the lowest temperature (e.g. synthetics). Finish by ironing fabrics which respond best to higher temperatures and steam—such as cotton and linen.
- If you iron a fabric made of a blend of fibres set the temperature of your iron to the most delicate fibre.
- Never use the burst of steam button on silks or synthetics.
- When using starch, it should be sprayed onto the reverse side of the fabric and the soleplate cleaned more frequently.
- Do not iron over sharp or hard objects such as buttons, studs or zippers as they will scratch the soleplate of your iron.

## Important

Your iron takes time to heat up and cool down. If you change the temperature setting on your iron, you must give it time to adjust to the new setting.

This is especially important when you change from a high setting to a lower one. It takes your iron longer to cool down than it does to heat up and this is the reason we recommend that you begin ironing at lower temperatures.

If you do need to reduce the temperature of your iron, wait until the temperature indicator light comes on and then goes off again before ironing. This will ensure that your iron has reached the lower temperature and is not too hot for the fabric being ironed.

For example, you have been ironing using the ●●● setting and want to change to the ●● setting:

1. Move the temperature control dial to the ●● setting. Initially, the temperature indicator light will not be lit because your iron is still at a higher temperature.
2. Wait until the temperature indicator light comes on and then goes out again. Your iron has now cooled to the correct temperature.



## Ironing without steam

If you intend to dry-iron fabrics there is no need to fill the water tank. However, if water is already in the water tank, you don't need to empty it.

1. Set the steam control to the off (0) position.
2. Plug your iron into the mains supply and switch on.
3. Rotate the temperature control dial until the desired setting is aligned with the dial pointer.
4. The temperature indicator light will illuminate while your iron is heating up. When the light goes out, your iron is ready to use.

## Steam ironing

**▲ During steam ironing, if you do not allow your iron to reach the selected temperature water may drip from the soleplate.**

It is recommended that for harder to iron fabrics such as cotton and linen, steam should be used when ironing.

When ironing cotton and linen, always select the highest temperature. Steam should never be used on delicate fabrics like nylons, acrylics and synthetics.

1. Fill your iron with water.
2. Plug your iron into the mains supply and switch on.
3. Set the temperature control dial to the ●●● setting. The hotter your iron, the more steam is generated.
4. The temperature indicator light will illuminate. When the temperature indicator light goes out your iron is ready to use. The temperature indicator light will turn on and off during ironing as your iron maintains the correct temperature.
5. Your iron has three steam settings **LO**, **HI** and off (0). Adjust the steam control to select the desired steam output.
6. The steam can be shut off at any time by setting the steam control to the off (0) position.

## Burst of steam

The temperature control dial must be set within the ●● and ●●● setting. Wait several seconds between each press of the steam button.

Press the shot of steam button whenever you have a stubborn crease that needs extra steam. Steam will burst from the holes in the soleplate of your iron into the fabric.





## Vertical steam ironing

**▲ Never iron garments when they are being worn.**

Your iron can be used for vertical steam ironing curtains, dresses on hangers etc.

1. Fill your iron with water.
2. Plug your iron into the mains supply and switch on.
3. Set the temperature control dial to the ●●● setting. The hotter your iron, the more steam is generated.
4. The temperature indicator light will illuminate to show that your iron is heating. When the temperature indicator light goes out, your iron is ready to use.
5. Hold your iron 15cm (6 inches) from the fabric.
6. Press the shot of steam button. The steam will penetrate the fabric removing the creases. To apply more steam press the shot of steam button again. Wait several seconds between each press of the button.

## Spraying

The spray function will only operate when there is water in the water tank.

1. The water spray can be used to help iron heavy fabrics or difficult areas (collars, pockets, sleeves, creases, etc). It can also be used when ironing delicate fabrics which cannot be steam ironed.
2. Simply press the button as required to produce a spray of water. If the spray is being used for the first time, or if the iron has been standing for some time, you may need to press the spray button a few times before it works correctly.

## Anti-drip feature

When the temperature of your iron is insufficient to create steam, the supply of water is cut off automatically to avoid any drips from the soleplate.

## Anti-scale filter

Your iron is fitted with a permanent anti-scale filter. This filter is fixed and cannot be removed for cleaning.

The filter is designed to reduce the build-up of limescale inside your iron. Limescale occurs during steam ironing due to water hardness.

Water hardness varies from one area to another. The effectiveness of the filter will depend on how 'hard' your water is.

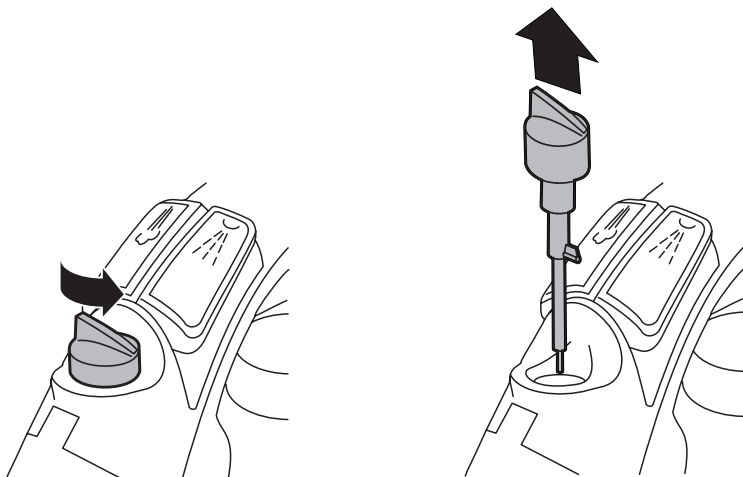


**⚠ Do not use harsh abrasives, chemical cleaners or solvents to clean the exterior of your iron because they will damage the surface.**

## Self-cleaning

The self-clean function removes scale and impurities. Use the self-clean function once every two weeks. If the water in your area is very hard, the self clean function should be used more frequently.

1. Ensure your iron is switched off and unplugged from the mains supply socket.
2. Set the steam control to the no steam (0) position.
3. Fill your iron with water to the MAX level.
4. Stand your iron on its heel rest, plug in and switch on at the mains supply.
5. Set the temperature control dial to the highest (MAX) setting. Allow your iron to heat up until the temperature indicator light goes out.
6. Unplug your iron and hold it over a sink with the soleplate facing downwards.
7. Turn the steam control to the **SC** setting and then pull the steam control out of the iron. Shake the iron vigorously while continuing to hold it over the sink. Hot water and steam will be ejected from the holes in the soleplate along with any impurities.
8. Refit the steam control after five minutes or when the water tank is empty.
9. Stand your iron on its heel rest, plug it in to the mains supply socket and switch on. When the temperature indicator light goes out, iron an old piece of cloth to allow any remaining water to escape.
10. After use, switch off and unplug your iron from the mains supply and allow it to fully cool. Empty out any remaining water.





### **Cleaning the soleplate of your Iron**

After each use, allow your iron to completely cool down before wiping the soleplate with a soft damp cloth. If polyester has burnt to the soleplate, iron a damp cotton cloth while your iron is still hot. If necessary, allow your iron to completely cool down then wipe over the soleplate with a soft cloth moistened with methylated spirits. Wipe off the methylated spirits with a damp cloth then dry the soleplate.

### **Cleaning the steam holes**

To remove any build-up in or around the steam holes which may affect steam performance, use a cotton wool tip moistened with methylated spirits. Wipe off the methylated spirits with a damp cloth then dry the soleplate.

### **Cleaning the exterior of your Iron**

To clean the exterior of your iron, wipe it with a soft damp cloth and wipe dry.



## Storing your iron

- Set the steam control to the no steam position (0).
- Switch the mains supply socket off and remove the plug.
- When the soleplate has cooled, empty the remaining water from the tank.
- Always store your iron on its heel rest. Do not store your iron resting on its soleplate, or in the carton.
- Do not wrap the power cord around the soleplate. The cord can be neatly wrapped around the heel of your iron.



## connection to the mains supply

### **⚠ This appliance must be earthed.**

This appliance is fitted with either a moulded or rewirable BS1363, 13 amp plug. The fuse should be rated at 13 amps and be ASTA approved to BS1362.

If the fuse in a moulded plug needs to be changed, the fuse cover must be refitted. The appliance must not be used without the fuse cover fitted.

If the plug is unsuitable, it should be dismantled and removed from the supply cord and an appropriate plug fitted as detailed below. If you remove the plug it must not be connected to a 13 amp socket and the plug must be disposed of immediately.

The wires of the mains lead are coloured in accordance with the following code:

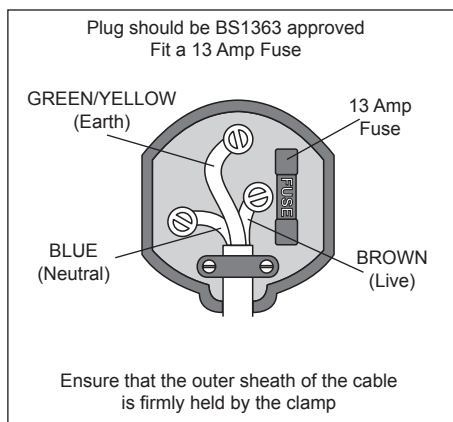
GREEN/YELLOW = EARTH      BLUE = NEUTRAL      BROWN = LIVE

The wire which is coloured GREEN/YELLOW must be connected to the terminal in your plug which is marked with an E or by the earth symbol ( $\perp$ ) or coloured GREEN or GREEN /YELLOW.

The wire which is coloured BLUE must be connected to the terminal in your plug which is marked with the letter N or coloured BLACK.

The wire which is coloured BROWN must be connected to the terminal in your plug which is marked with the letter L or coloured RED.

If any other plug is used, a 13 amp fuse must be fitted either in the plug or adaptor or at the distributor board.





These appliances are built to the very highest of standards. There are no user serviceable parts. Follow these steps if the unit fails to operate:

1. Check the instructions have been followed correctly.
2. Check that the fuse has not blown.
3. Check that the mains supply is functional.

If the appliance will still not operate, return the appliance to the place it was purchased for a replacement. To return the appliance to the Customer Service Department, follow the steps below:

1. Pack it carefully (preferably in the original carton). Ensure the unit is clean.
2. Enclose your name and address and quote the model number on all correspondence.
3. Give the reason why you are returning it.
4. If within the guarantee period, state when and where it was purchased and include proof of purchase (e.g. till receipt).
5. Send it to our Customer Service Department at the address below:

**Customer Service Department**

**Pulse Home Products Limited**

**Middleton Road**

**Royton**

**Oldham**

**OL2 5LN, UK.**

**Telephone: 0161 621 6900 Fax: 0161 626 0391**

**e-mail: [info@pulse-uk.co.uk](mailto:info@pulse-uk.co.uk)**



This product is guaranteed for a period of 1 year from the date of purchase against mechanical and electrical defects.

This guarantee is only valid if the appliance is used solely for domestic purposes in accordance with the instructions provided, that it is not connected to an unsuitable electricity supply, dismantled or interfered with in any way or damaged through misuse. Under this guarantee we undertake to repair or replace free of charge any parts found to be defective.

Nothing in this guarantee or the instructions relating to the product excludes, restricts or otherwise affects your statutory rights.

In line with our policy of continuous development, we reserve the right to change this product, packaging and documentation without notice.

# Breville

Breville is a registered trademark of Pulse Home Products Limited

© Pulse Home Products Limited

Breville have a policy of continuous improvement and we reserve the right to change specifications without notice

Pulse Home Products Limited, Royton, Oldham OL2 5LN, UK

[www.breville.co.uk](http://www.breville.co.uk)